



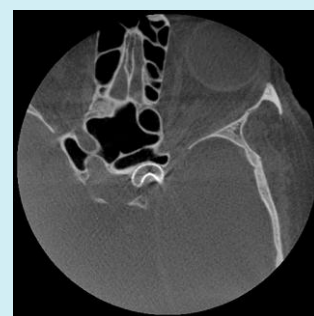
Innova CT HD

Next-generation 3D imaging

Interventional procedures are becoming increasingly complex and clear 3D visualization of soft tissue, anatomical structure, and small interventional devices is crucial. CT-like imaging made available for interventional procedures has the potential to address even the most formidable challenges.

What's new

- Less streak artifacts without increasing dose¹
- Uniform images for soft tissue visualization
- Higher spatial resolution for improved visualization of small devices²



Overview

Innova* CT HD provides exceptional fine image details and quality on cross-sections to help you clearly visualize soft tissues, bones and small devices during your interventional procedures.



Visit us:

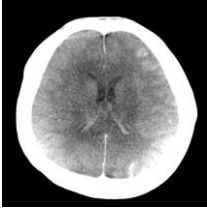
www.gehealthcare.com/aw/applications/innova-3d_and_innova_ct/



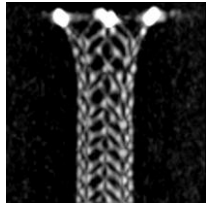
Features

Innova CT HD provides exceptional fine image details and quality on cross-sections to help you clearly visualize soft tissues, bones and small devices

- High frame rate (50 fps) reduces streak artifacts and improves visualization of bones and soft tissues
- Uniform images for soft tissue visualization with dedicated scatter reduction algorithm



- High resolution protocol increases spatial resolution for better device visualization in small fields of view (FOV)



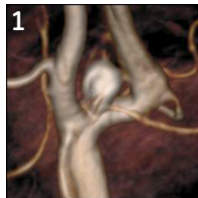
- Three rotations speeds are available
 - 40°/s (approx. 250 views in 5s)
 - 28°/s (approx. 350 views in 7s)
 - 16°/s (approx. 600 views in 12s)
- Wide range of fields of views available to fit visualization preferences
- 3D models can be analyzed with a wide range of tools available in Volume Viewer on AW

Innova Subtracted 3D³

Innova Subtracted 3D reconstructs 3D volumes from 2 consecutive rotational acquisitions. It displays images to help quickly visualize vessels without the need to remove surrounding bones, tissues and implanted devices.

Mask and contrast functions are performed at a frame rate of 50 fps and a rotation speed of 40°/s or 28°/s to minimize patient motion artifacts.

- Display the mask series, subtracted vascular anatomy, and standard 3D vascular images side by side or separately.



Non subtracted 3D



Subtracted 3D



Subtracted and 3D « drag & drop » merge showing coils

System Requirements

AW VolumeShare 5 or higher

Indications for Use

Innova 3D and Innova CT are software options, which reconstruct 3D volumes from Rotational Fluoroscopy acquisition to provide images that assist the physician in diagnosis, surgical planning, Interventional procedures and treatment follow-up. Innova CT is intended for imaging bone and soft tissues as well as other internal body structures. Innova 3D and Innova CT are not intended for mammography applications.

Standards and Regulations

This product complies with the European Council Directive 93/42/EEC Medical Device Directive as amended by European Council Directive 2007/47/EC.



GE imagination at work



© 2012 General Electric Company.

All rights reserved. Data subject to change.

GE and GE Monogram are trademarks of General Electric Company.

* Trademark of General Electric Company

¹Compared to Innova CT using default protocol settings, except for "Soft Tissues" protocol

²Compared to Innova CT using small fields of view

³Requires Innova Subtracted 3D option